



TOWN OF WESTPORT
WESTPORT, MASSACHUSETTS 02790

OFFICE OF BOARD OF HEALTH
856 MAIN ROAD

Tel: (508) 636-1015
Fax: (508) 636-1016
Health@Westport-MA.gov
westport-ma.com

Matthew J. Armendo
Director

Westport Board of Health
COVID-19 Update
January 29, 2021

Case Status:

Total number of confirmed COVID-19 positive cases of Westport residents on the state's weekly city & town report of January 28, 2021 was **1169 - up 63 cases since last week**. Westport remains in the RED zone of higher risk but the data are improving. The rolling 14 day incidence rate of cases has decreased significantly to **63.5/100,000**, although this is still above the state average. Please visit the state's [interactive data dashboard](#) for more details.

Testing Data:

19,259 COVID tests have been performed on Westport residents to date, based on the state's January 28th weekly report. There were **184** positive tests out of 2081 done in the last 14 days for a positivity rate of **8.84%** (also down significantly from 11.74% last week). These are encouraging trends. The statewide positivity rate declined to 5.51%.

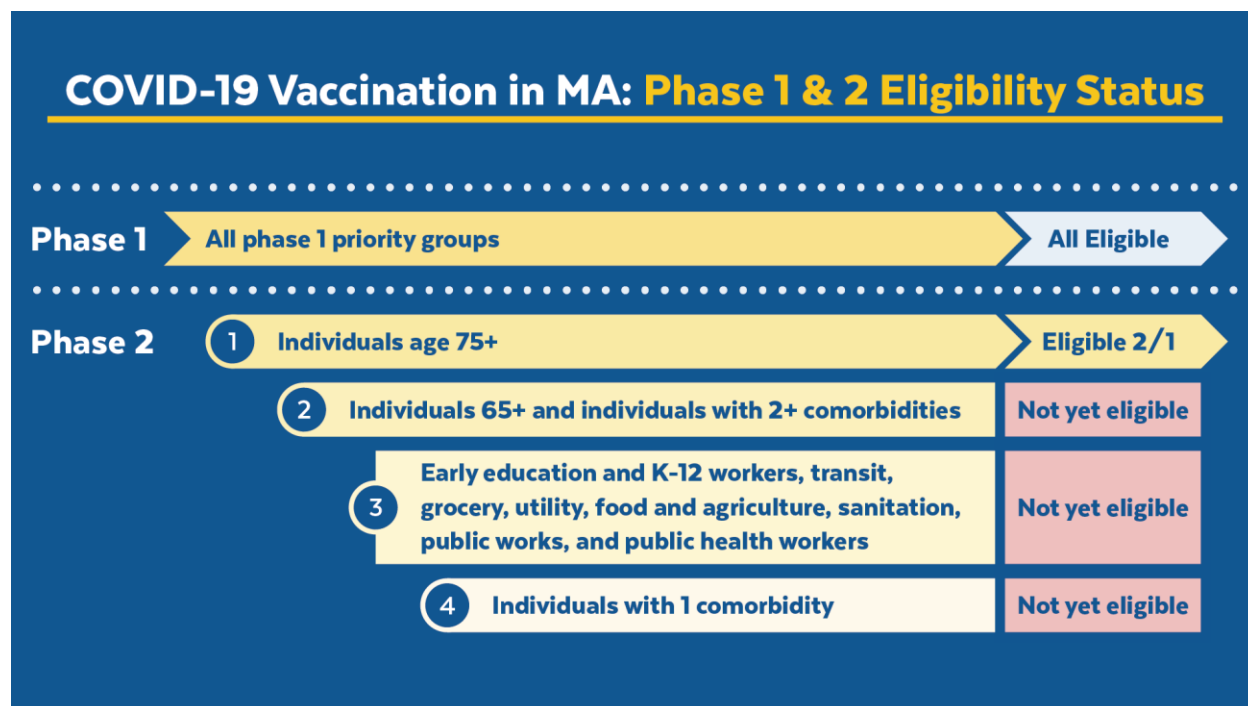
New Variants of COVID-19:

The UK variant has been detected in Massachusetts and the Brazil and South African variants have also been found in the US. Since they are more contagious, the importance of following CDC's recommendations for slowing the spread—wearing masks, staying at least 6 feet apart from others, avoiding crowds, ventilating indoor spaces, and washing hands often—remains vital, even if you have been vaccinated against COVID-19. Learn more: [New COVID-19 Variants | CDC](#).

Local Vaccine Update:

- As of January 28th, 32,500 doses of Pfizer and Moderna vaccines have been distributed to Bristol County vaccination sites. This represents 5.7% of the population – one of the lowest coverage rates among all counties in the state.
- All of **Phase 1 priority** categories, including home-based health care workers and non-COVID facing health care workers are now eligible able to get vaccinated.
- Persons age 75+ will be eligible beginning February 1st.
- The Board of Health will not be able to receive a supply the Moderna COVID-19 vaccine until late February and even then it is expected to be limited.
- In the meantime, Westport is also partnering with Dartmouth to offer scheduled vaccine clinics for our residents. These will be held at Dartmouth High School. However, clinic dates & times cannot be posted until we have confirmation of how much vaccine the state will actually allocate each week. We will post the clinic schedule on the BOH website and through e-alert as soon as we know.
- You can schedule an appointment for the Dartmouth site at <https://www.maimmunizations.org/> and bring proof of ID, and the self attestation of eligibility form (or fill it out onsite) to the clinic. Appointments will be posted as vaccine supply becomes available. **PLEASE DO NOT CALL the Board of Health or Dartmouth Public Schools if you do not see slots available. DO NOT GO TO THIS SITE IF YOU DO NOT HAVE AN APPOINTMENT.**

- Local pharmacies and mass vaccination sites are also providing vaccine to eligible residents. The closest sites are CVS and Walgreens in Fall River. Bristol Community College is another site. Gillette Stadium is currently the closest mass vaccination site. Due to high demand and constrained vaccine supply, COVID-19 vaccination appointments are limited. **Appointments will be added on a rolling basis, and so the state administration has advised residents to check back frequently.** CVS Health is posting a limited number of new appointments online daily. Currently, the mass vaccination sites are posting large batches of appointments once a week on Thursdays for the next 7 days.
- For all of the above clinics, go here to find available slots:
<https://www.mass.gov/covid-19-vaccine>



SECTOR-SPECIFIC CAPACITY RESTRICTIONS & GATHERING LIMITS

Capacity Limits: Most customer-facing businesses operating in Massachusetts **remain subject to a 25% capacity limit.** For a list of sectors subject to the extended capacity restrictions, click [here](#).

Gatherings Limit: The current gathering limits in place since December 26 are **extended to Monday, February 8th.** Indoor gatherings and events remain limited to 10 people. Outdoor gatherings and events remain limited to 25 people outside. The gatherings limit applies to private homes, event venues and public spaces.

Updated Travel Order Guidance:

Vaccinated individuals must continue to comply with the Governor's Travel Order and related testing and quarantine requirements. However, those who are COVID-19-recovered, (i.e., tested positive more than 10 days but less than 90 days ago without current symptoms) do not need to quarantine or obtain a negative PCR when traveling back to Massachusetts. <https://www.mass.gov/info-details/covid-19-travel-order>

COVID Testing:

Stop the Spread: Has been extended to March 15th. Free testing of asymptomatic individuals. Local sites are in Fall River and New Bedford. The Whale's Tooth parking lot rapid test site in New Bedford, capable of handling 1000 tests a day, is operational. Register at app.beacontesting.com/.

All Test sites: Check the individual test sites for requirements.

Communication Resources:

[Visitors to the Stop COVID-19 Public Messaging webpage](#) will find both printable flyers, posters, and digital resources in multiple languages on topics such as:

- [When can I get the COVID-19 vaccine?](#)
- [Vaccine Graphics](#)
- Statewide guidelines, advisories, and orders
- Staying safe in the community
- Using local public alert systems for COVID-19 information
- Materials for Business
 - [Return to work guidance](#)
 - [Employee Screening Questionnaire](#)
 - [Business guidance – New, Temporary Capacity Limits](#)
 - [Updated safe store tips for retailers](#)

Town COVID Updates:

- **Town Hall and Annex** – Open to the public BY APPOINTMENT ONLY. Service by phone, mail, outdoor drop box, or online is recommended. Face masks are required for in-person appointments.
- **The Westport Food Pantry is at the Westport Grange, 931 Main Rd.** Next food pantry pick-up will be Monday, February 1st from 9 am to noon. Monetary donations can be sent to the Friends of the Westport Council on Aging (FWCOA) Attn. Food Pantry, PO Box 4228, Westport, MA 02790. Food and grocery gift card donations are accepted on Tuesday, Wednesday and Thursday mornings.
- **Pet Food Pantry** – Donations of dry or canned dog or cat food, (maximum weight 25#), as well as treats, toys, cat litter and puppy training pads are accepted. Please drop off your pet supply donation at the Grange, during its regular donation times.
- **Schools** - The Westport Community Schools now reports weekly updates on COVID cases at <https://westportschools.org/covid-19/>.

In closing:

Stay safe everyone. Thank you for your continued cooperation.

Matthew J. Armendo, Director